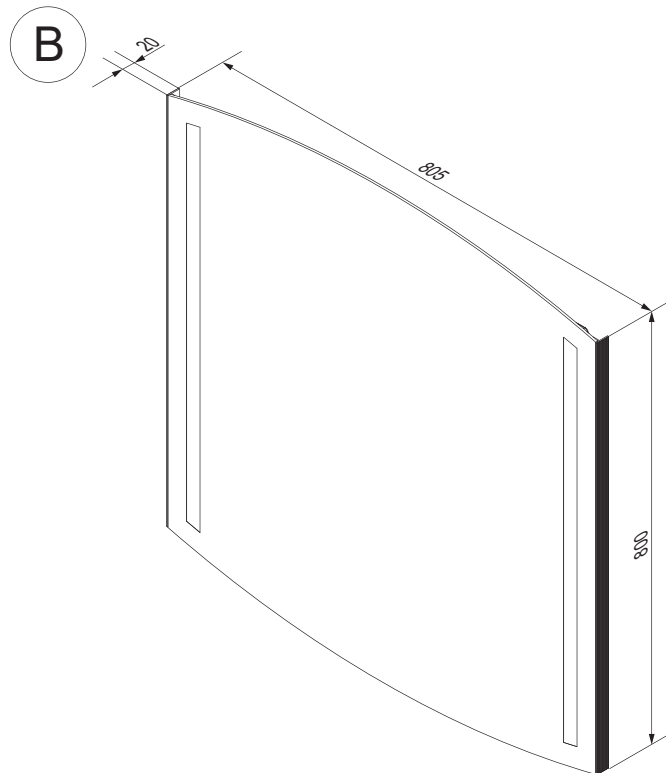
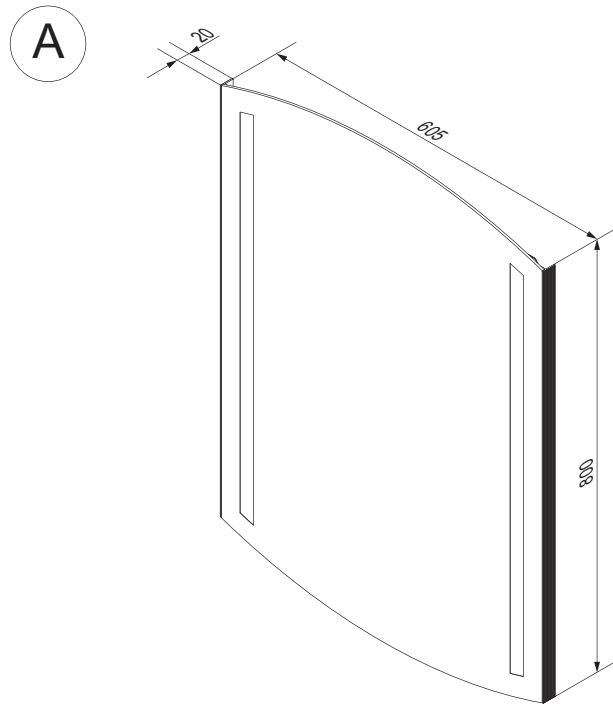
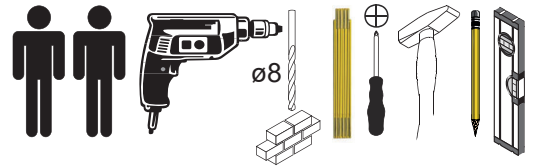


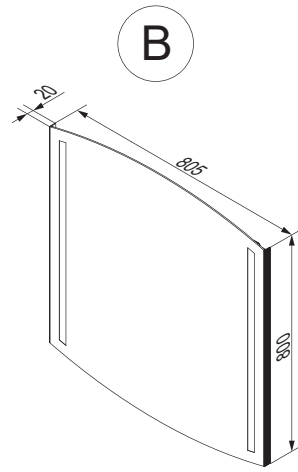
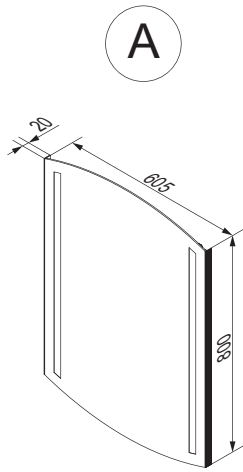
Dieses Produkt enthält Lichtquellen der Energieeffizienzklasse F.  
This product contains light sources of energy class F.



Alle Maßangaben sind ca.-Maße und können geringfügig abweichen.  
All measurements are approximate and may vary slightly.

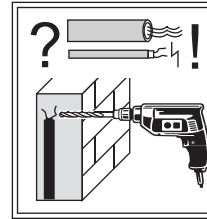
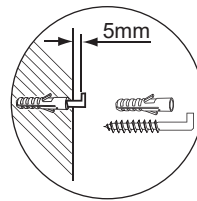
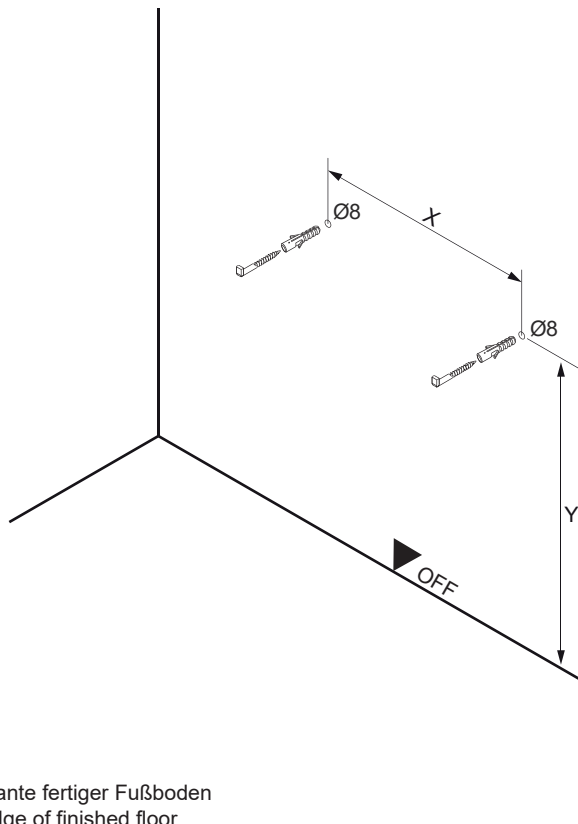
Fackelmann GmbH + Co. KG  
Sebastian-Fackelmann-Str. 6  
91217 Hersbruck • Deutschland  
FAX: 09151/811-294  
Servicetelefon: 09151/811-206  
servicebm@fackelmann.de  
www.fackelmann.com

5MAN844900 S1 16/22



**!** Alle Maße sind in Millimetern angegeben, unverbindlich, vor Ort zu prüfen und stellen nur eine Empfehlung dar. Änderungen vorbehalten.  
 All dimensions are given in millimeters, without obligation, to be checked on site and represent only a recommendation. Subject to change.

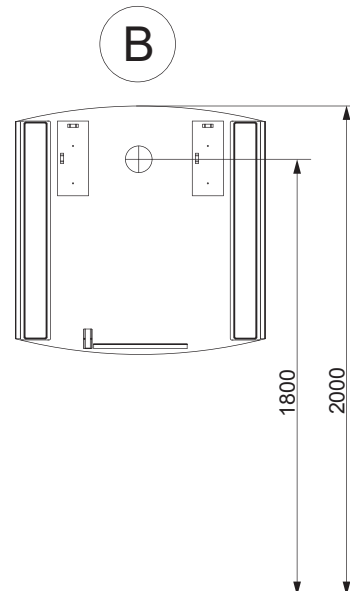
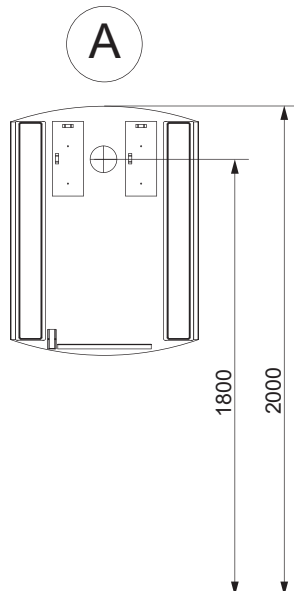
**1**



4XBB81HDN0  
1 x

Schrank cabinet	Y in mm	X in mm
<b>A</b>	1929	235
<b>B</b>	1929	435

OFF = Oberkante fertiger Fußboden  
 Top edge of finished floor



Ansicht von hinten  
 View from the back

▼ OFF

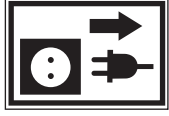


Austausch Sensorschalter/  
Change of sensor switch

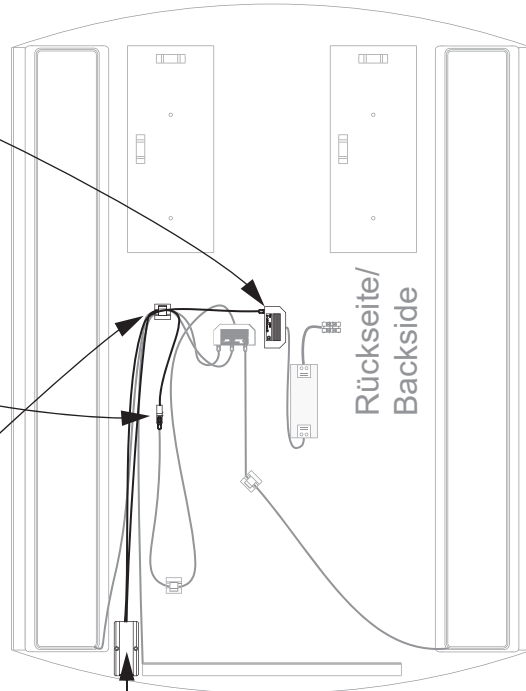
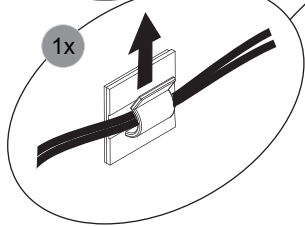
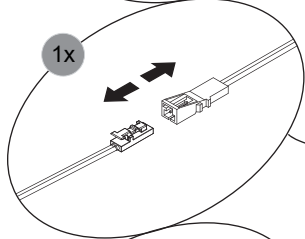
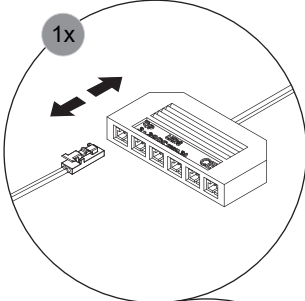
Abbildungen beispielhaft.  
Arbeitsfolge für alle Artikelnummern identisch.  
Illustrations only exemplary.  
Identical work sequences for all article numbers.

1

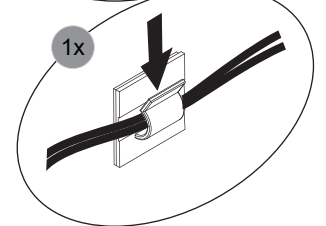
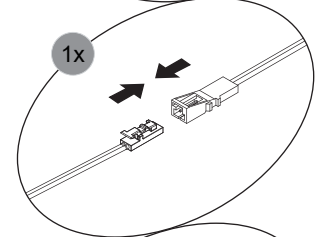
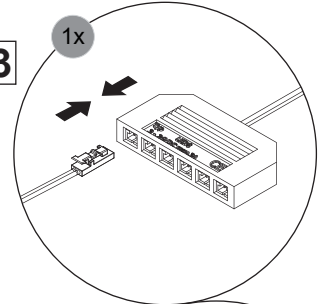
1.1



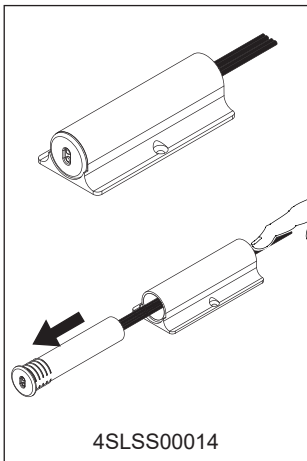
VDE 0100-701 !  
IEC 60364-7-701 !



1.3



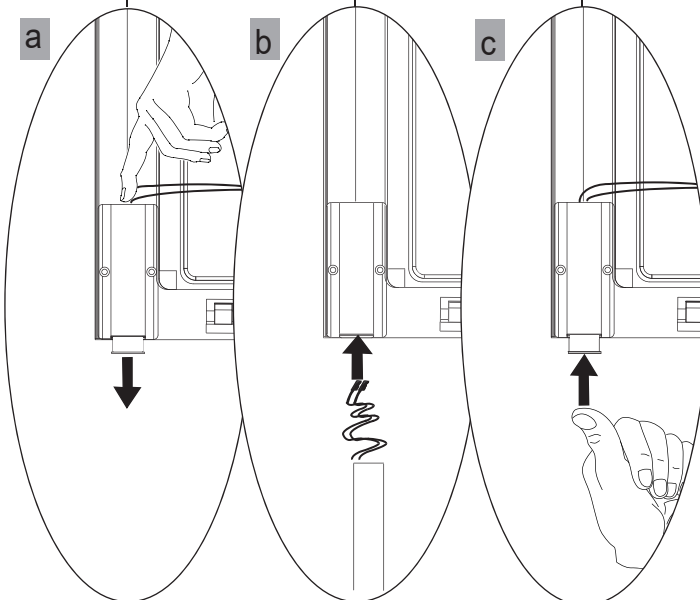
Ersatzteil/  
Replacement part



4SLSS00014

1 x

1.2



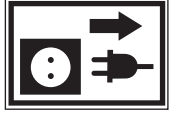


Austausch LED-Band der  
Ambientebeleuchtung/  
Change of LED-stripe of the  
ambient lighting



Abbildungen beispielhaft.  
Arbeitsfolge für alle Artikelnummern identisch.  
Illustrations only exemplary.  
Identical work sequences for all article numbers.

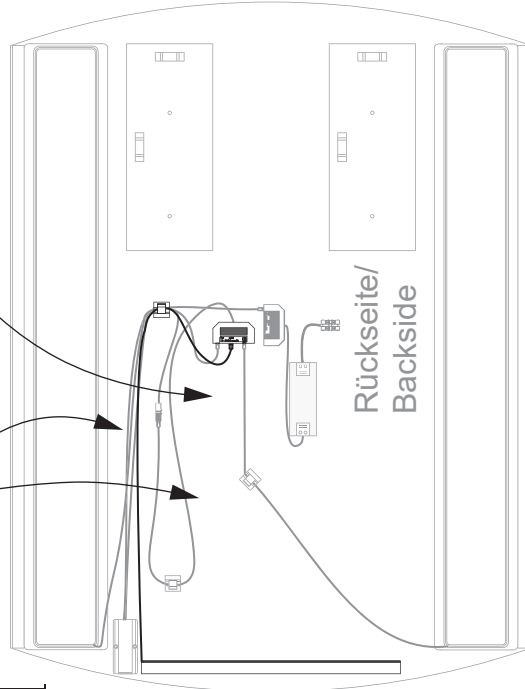
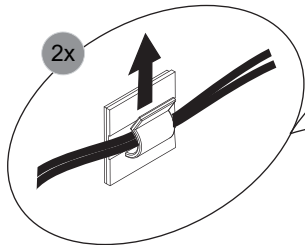
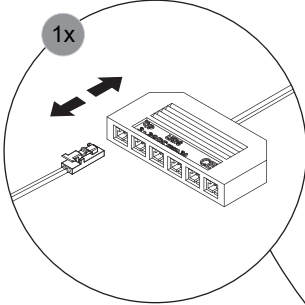
1



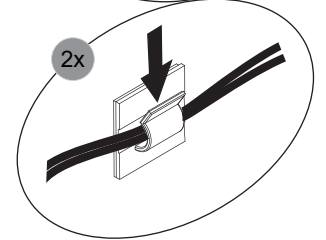
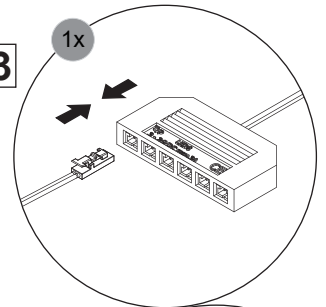
1.1



VDE 0100-701 !  
IEC 60364-7-701 !

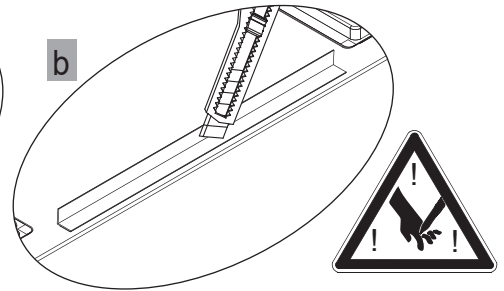
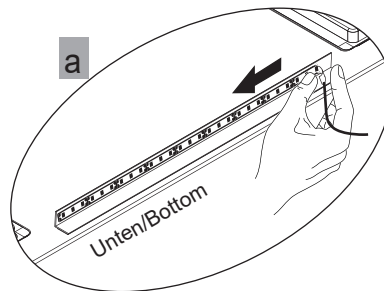
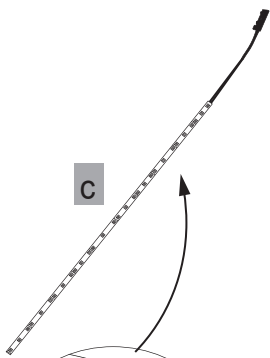


1.3



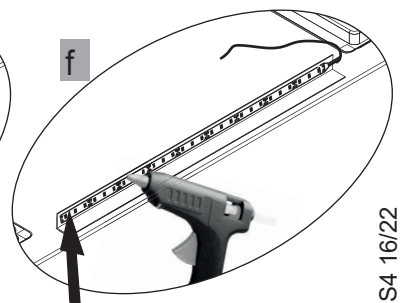
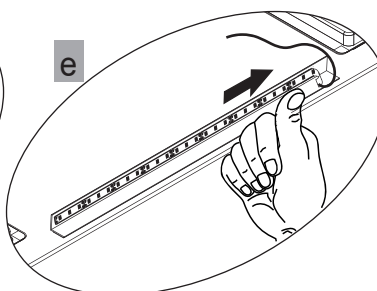
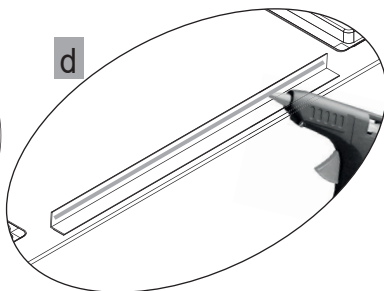
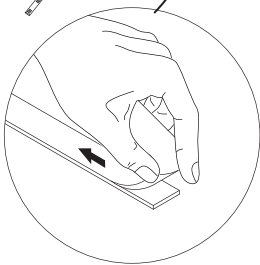
1.2

Ersatzteil/Replacement part	
4SL0845120	 1x



**ACHTUNG: Heiß!**  
**Caution! Hot!**

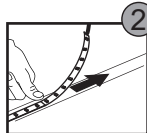
Kleberreste vorsichtig entfernen/  
Remove adhesive residues carefully



**Obere Kante** des LED-Bandes  
mit Heißkleber fixieren/  
Fix **upper edge** of LED-stripe  
with hot glue



max. 30sec.



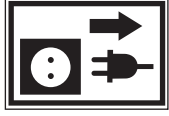


Austausch Kunststoffschalen  
mit LED-Band/  
Change of plastic shell with  
LED-stripe

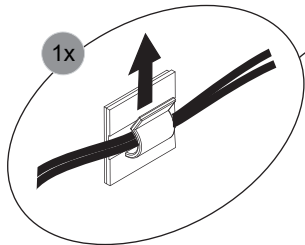
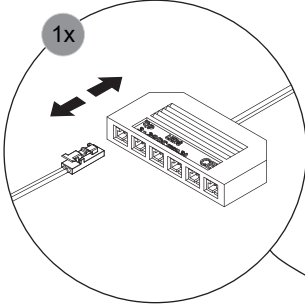
Abbildungen beispielhaft.  
Arbeitsfolge für alle Artikelnummern identisch.  
Illustrations only exemplary.  
Identical work sequences for all article numbers.

1

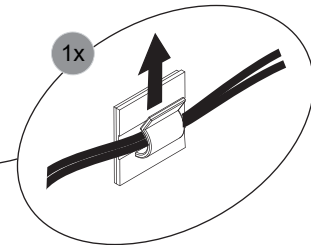
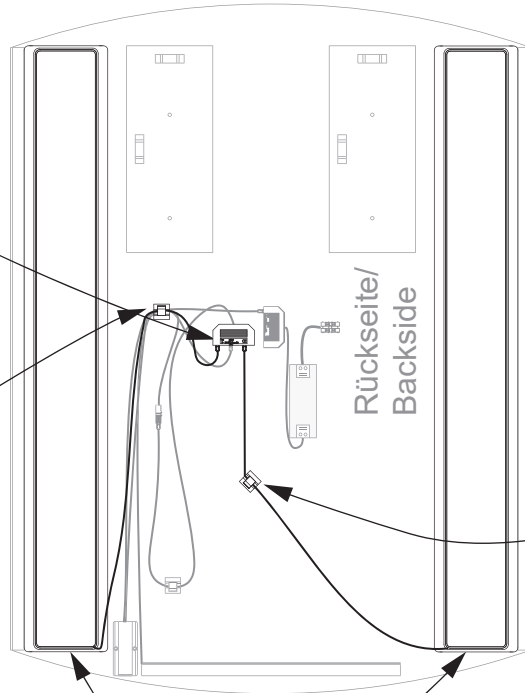
1.1



VDE 0100-701 !  
IEC 60364-7-701 !



2MLSR84502

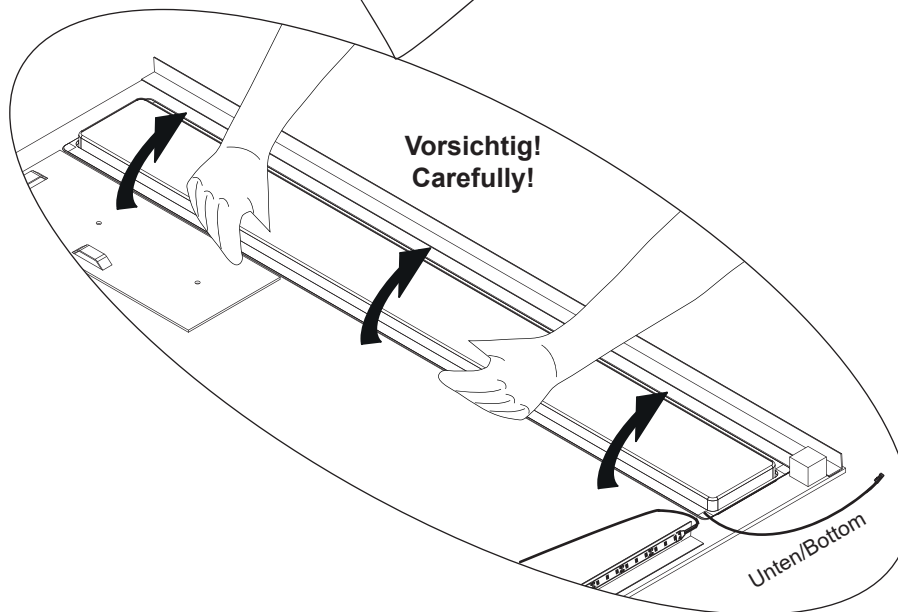


2MLSL84502

2MLSR84502  
Frontansicht rechts / front view right

2MLSL84502  
Frontansicht links / front view left

1.2

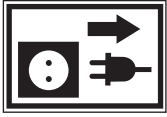




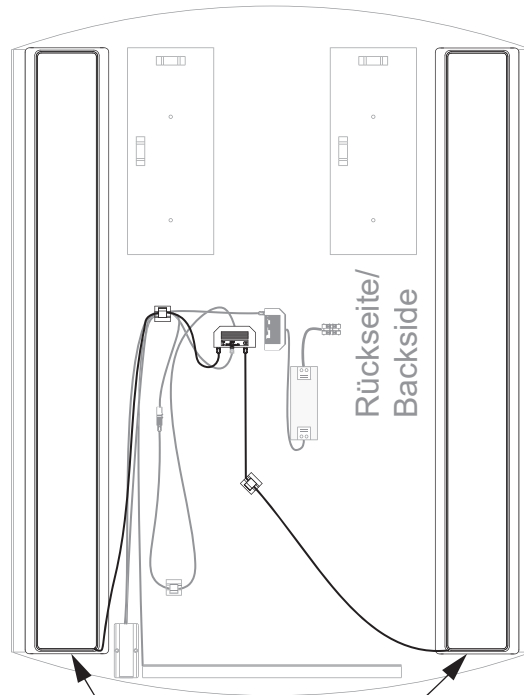
Austausch Kunststoffschalen  
mit LED-Band/  
Change of plastic shell with  
LED-stripe

Abbildungen beispielhaft.  
Arbeitsfolge für alle Artikelnummern identisch.  
Illustrations only exemplary.  
Identical work sequences for all article numbers.

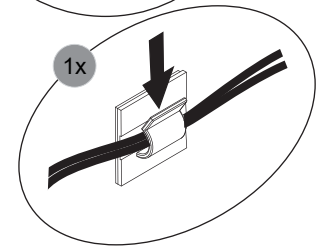
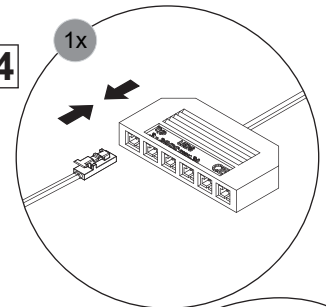
1.5



VDE 0100-701 !  
IEC 60364-7-701 !



1.4



2MLSR84502  
Frontansicht rechts / front view right

2MLS84502  
Frontansicht links / front view left

1.3

