

deco™



Compatible with  
**amazon alexa**

works with  
**Google Home**

# AX1500

## Whole Home Mesh Wi-Fi 6 System

Superior Mesh Wi-Fi, Everywhere

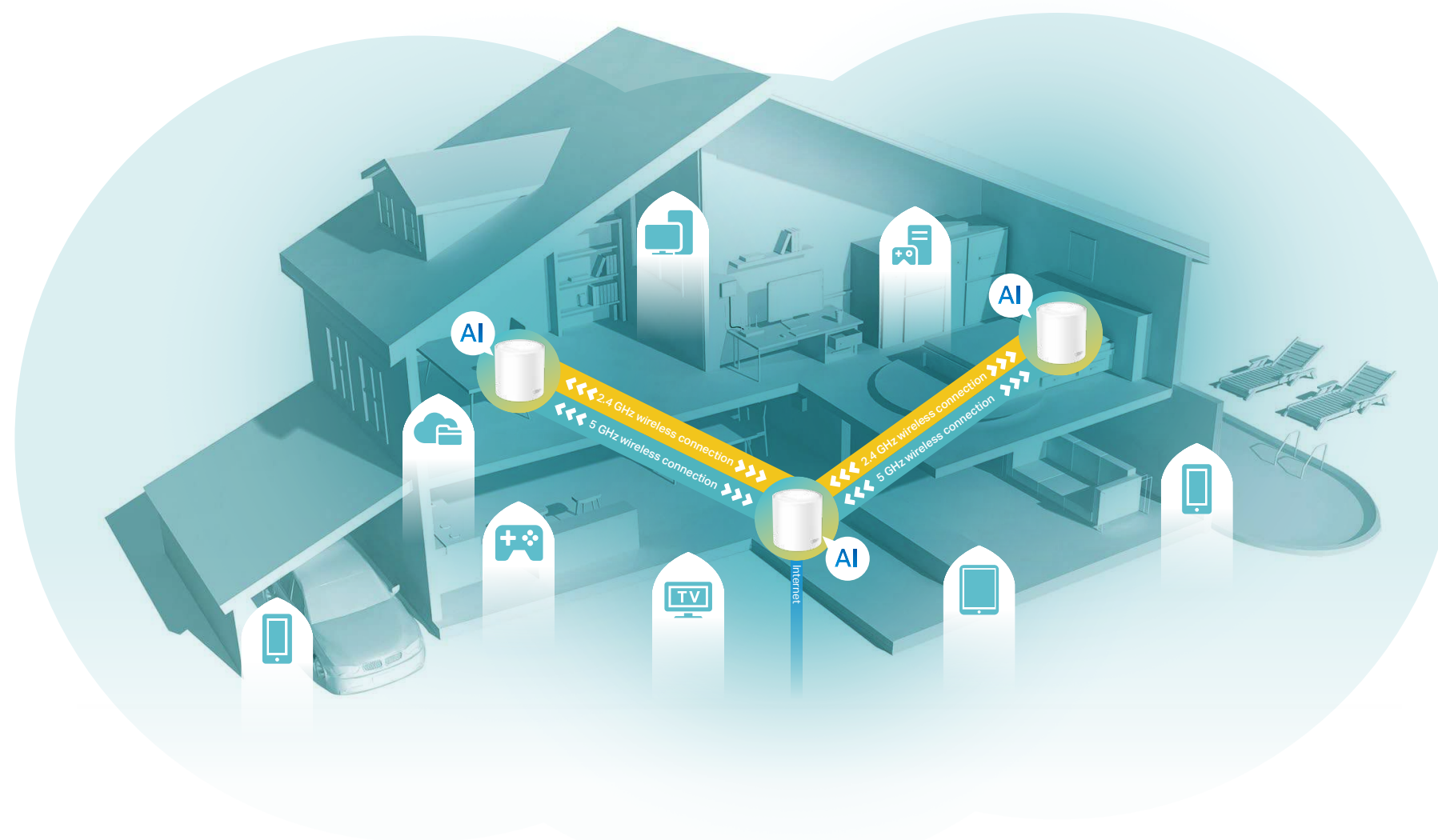
Deco X10



# Highlights

## AI-Driven Mesh, Customized Wi-Fi for You

Armed with AI-Driven Mesh technology, Deco X10 automatically learns and improves itself from experience. This provides the ideal mesh Wi-Fi unique to your home and network environment. Walk through your home and enjoy seamless streaming at the fastest possible speeds.



Improved Capacity for More Connections



Unrivaled Wi-Fi 6 Speed up to 1.5 Gbps<sup>†</sup>



Immersive Streaming, No More Buffering



### Wi-Fi Dead-Zone Killer

Eliminate weak signal areas with a clearer, stronger whole home Wi-Fi generated from Wi-Fi 6. No more searching around for a stable connection.<sup>Δ</sup>



### No More Buffering

Wi-Fi 6 brings lag-free connections to hyper-connected home. Enjoy a smooth gaming and 4K streaming experience even when multiple compatible devices are online.



### Seamless Roaming with One Wi-Fi Name

Deco units work together to form a unified network with a single network name. Walk through your home and stay connected with the fastest possible speeds.<sup>‡</sup>



### Parental Controls

Limit online time and block inappropriate websites according to unique profiles created for each family member.

# Features



## Robust Parental Controls

Manage content and control when each device can access the internet

- Profiles – Create a profile for each family member, and manage them individually
- Content Filter – Four levels are available for filtering content, each catering to a specific age group
- Time Controls – Set daily time limits for the total time spent online and block a person's internet access between certain times
- Pause the Internet – Pause a family member's internet and resume it whenever you like



## Easy Setup by Deco App

Easily set up Decos and find the ideal spot to place each unit

- Auto Connection Test – Tests the internet connection of your Decos and helps to identify a suitable location for them
- Remote Management – Manages your Deco network from a smartphone or tablet via the app, no matter where you find yourself
- Online Upgrade – Keeps informed of the latest firmware updates



## Security

Safeguard your home network with a firewall and wireless encryption

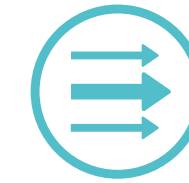
- Encryption for Secure Network – WPA/WPA2/WPA3 encryptions provide active protection against security threats
- Firewall – Protects your network devices from malicious attacks
- Blocklist – Add specific devices to blocklist to protect your network from unauthorized users



## Two Modes in One

Choose the Wireless Router mode or Access Point mode for your network needs

- Wireless Router Mode – Creates an instant private wireless network
- Access Point Mode – Creates Wi-Fi access for any existing wired network



## Quality of Service

Prioritize devices and bandwidths for faster performance when needed

- For Devices – Give high priority to the devices that need the fastest internet connection



## Work with All Deco Models

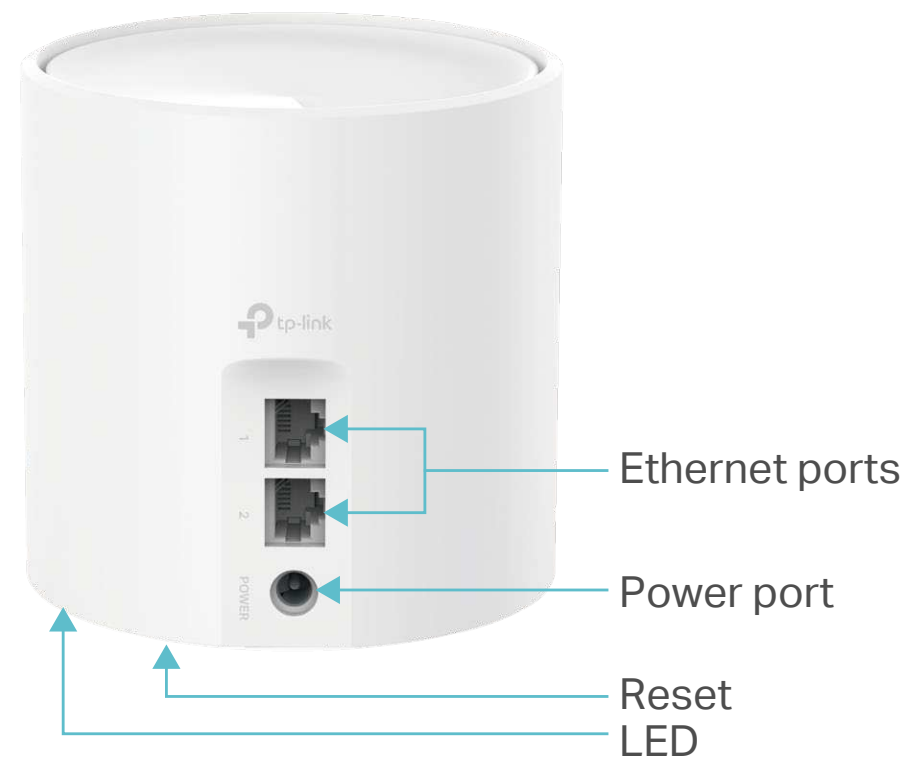
Form a Mesh network with your desired Deco models

- Compatible with All Deco Models – All Deco models can work together. Just expand Mesh Wi-Fi coverage anytime by adding more Decos
- Deco Mesh Technology – Eliminates dead zones and provides uninterrupted WiFi throughout your home

# Specifications

## Hardware

- Ethernet Port: 2 Gigabit ports per Deco unit (WAN/LAN auto-sensing)
- Button: 1 RESET button on the underside
- Antenna: 2 internal antennas
- Power Consumption (with power adapter): 11.5 W max
- Dimensions (W × D × H): 4.33 × 4.33 × 4.49 in (110 × 110 × 114 mm)
- Power Adapter Input: 100-240V ~ 50-60Hz 0.6A
- Power Adapter Output: 12V = 1A



## Wireless

- Wireless Standards: IEEE 802.11a/n/ac/ax 5GHz<sup>†</sup>, IEEE 802.11b/g/n 2.4GHz
- Mesh protocol: 802.11k/v
- Frequency: 2.4GHz and 5GHz
- Signal Rate: 300 Mbps on 2.4GHz, 1201 Mbps on 5GHz<sup>†</sup>
- Transmit Power: FCC: <30 dBm(2.4GHz), <30 dBm(5GHz)
- Wireless Security: WPA/WPA2-PSK/WPA3 encryptions

## Software

- Working Mode: Router, Access Point
- WAN Type: Dynamic IP/Static IP/PPPoE/L2TP/PPTP
- DHCP: Server
- Quality of Service: WMM
- Firewall Security: SPI Firewall
- Protocols: Supports IPv4 and IPv6
- Guest Network: 2.4GHz Guest Network×1, 5GHz Guest Network×1
- Features: Parental Controls, QoS (Quality of Service), Reporting, Assisted Setup, Address Reservation, Port Forwarding, TP-Link DDNS, IPTV, IPv6, LED Control
- Management: Local Management; Remote Management; Multi-Managers

## Others

- Certification: FCC, RoHS
- Environment:
  - Operating Temperature: 0°C~40°C (32°F~104°F)
  - Storage Temperature: -40°C~60°C (-40°F~140°F)
  - Operating Humidity: 10%~90%
  - Storage Humidity: 5%~90%
- Package Contents for Deco X10(1-pack):
  - 1 Deco X10 unit
  - 1 RJ45 Ethernet cable
  - 1 Power adapter
  - 1 Quick Installation Guide
- Package Contents for Deco X10(2-pack):
  - 2 Deco X10 units
  - 1 RJ45 Ethernet cable
  - 2 Power adapters
  - 1 Quick Installation Guide
- Package Contents for Deco X10(3-pack):
  - 3 Deco X10 units
  - 1 RJ45 Ethernet cable
  - 3 Power adapters
  - 1 Quick Installation Guide

Attention: This device may only be used indoors in all EU member states, EFTA countries and Northern Ireland.

Attention: This device may only be used indoors in Great Britain.

This device complies with part 15 of the FCC Rules. Operation is subject to the following two conditions: (1) This device may not cause harmful interference, and (2) this device must accept any interference received, including interference that may cause undesired operation.

Specifications are subject to change without notice. Google, Google Home, and Google Play are trademarks of Google LLC. All the brands and product names are trademarks or registered trademark of their respective holders.

<sup>†</sup>Maximum wireless signal rates are the physical rates derived from IEEE Standard 802.11 specifications. Actual wireless data throughput and wireless coverage, and quantity of connected devices are not guaranteed and will vary as a result of network conditions, client limitations, and environmental factors, including building materials, obstacles, volume and density of traffic, and client location.

<sup>‡</sup>Clients need to support 802.11k/v and may require additional setup. Performance may vary depending on the client device.

<sup>§</sup>Use of Wi-Fi 6 and other features including OFDMA, MU-MIMO, 1024-QAM, BSS Color require clients to also support the corresponding features.

Actual network speed may be limited by the rate of the product's Ethernet WAN or LAN port, the rate supported by the network cable, internet service provider factors, and other environmental conditions.

©2023 TP-Link

[www.tp-link.com](http://www.tp-link.com)

TP-Link AX1500 Whole Home Mesh Wi-Fi 6 System Deco X10