

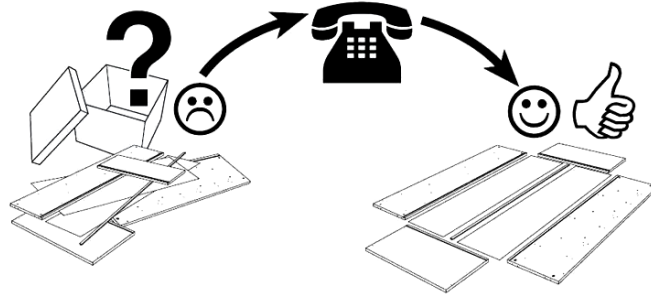
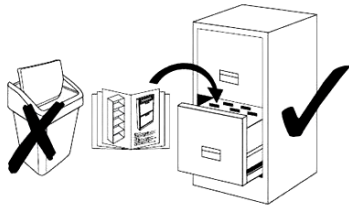
- | | | | |
|------|-----------------------------|------|-------------------------|
| (D) | Montageanleitung | (FR) | Notice de montage |
| (NL) | Handleiding voor de montage | (CZ) | Montážní návod |
| (HU) | Szerelési útmutató | (TR) | Montaj talimatı |
| (GB) | Assembly instructions | (IT) | Istruzioni di montaggio |
| (PL) | Instrukcja montażu | (SK) | Návod na montáž |
| (RO) | Instrucțiuni de montaj | (RU) | Инструкция по монтажу |

**Service • Assistenza • Dienstverlening • Serwis
Servis • Szerviz • Сервисная служба**

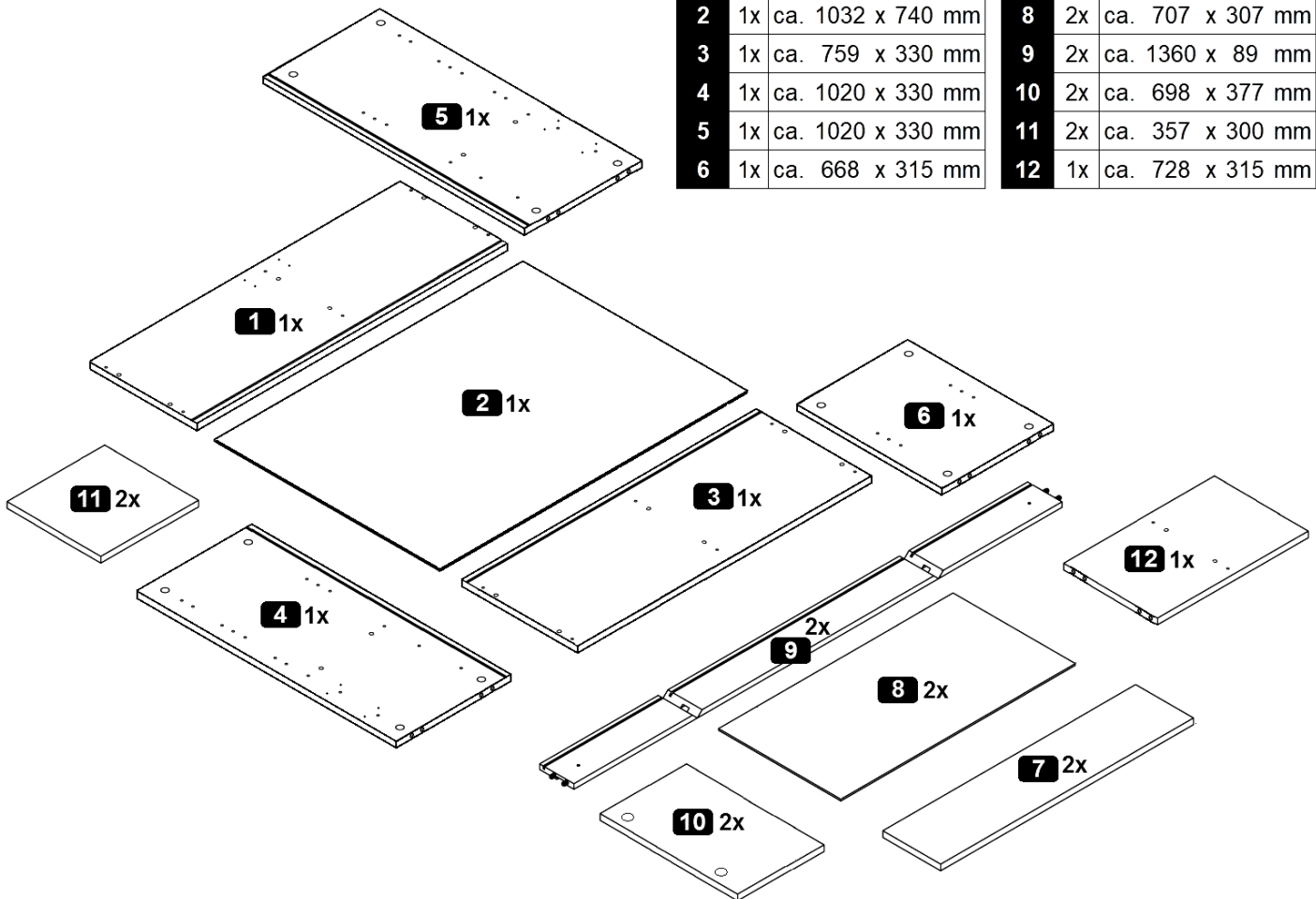
Name • Nom • Nome • Naam •
Nazwa • Jméno • Názov • Név •
Denumire • Isim • Название

Nr. • No. • N° • Номер • Č • Sz

Typ • Type • Tip • Típus • Tipo •
Тип



1	1x	ca. 759 x 330 mm	7	2x	ca. 757 x 172 mm
2	1x	ca. 1032 x 740 mm	8	2x	ca. 707 x 307 mm
3	1x	ca. 759 x 330 mm	9	2x	ca. 1360 x 89 mm
4	1x	ca. 1020 x 330 mm	10	2x	ca. 698 x 377 mm
5	1x	ca. 1020 x 330 mm	11	2x	ca. 357 x 300 mm
6	1x	ca. 668 x 315 mm	12	1x	ca. 728 x 315 mm



A 8,0 x 30 mm 16x	B 16x	C 16x	D 6x	E 3,0 x 12 mm 12x	F 6x	G 4,0 x 20 mm 6x
H gerade 4x	I h=2 4x	J M4,0 x 9 mm 4x	K 2,7 x 20 mm 12x	L 4x	M 6,3 x 13 mm 8x	N 1x
O 8x						



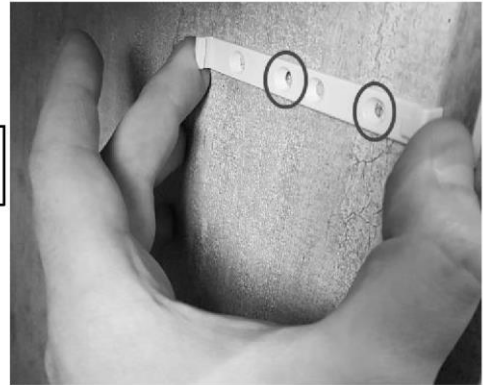
Push-To-Open 1 / 2



1.



4.



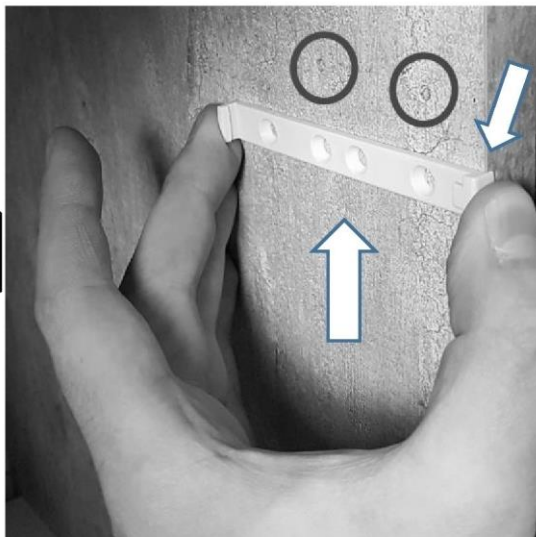
2.



5.



3.



6.



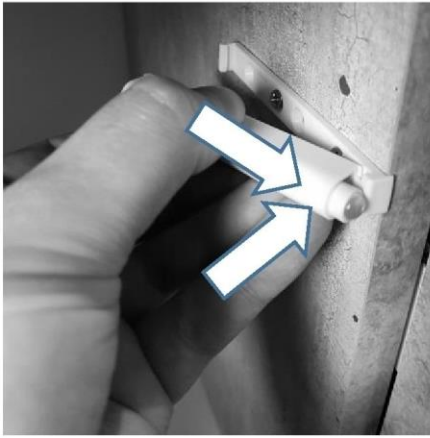
MA1



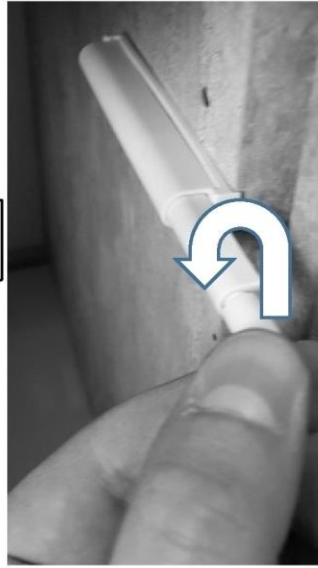
Push-To-Open 2 / 2



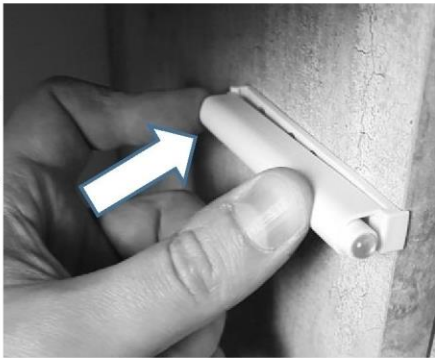
7.



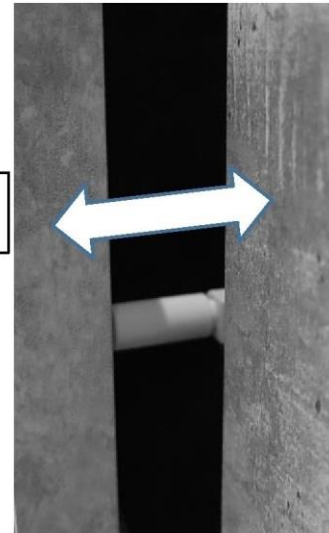
10.



8.



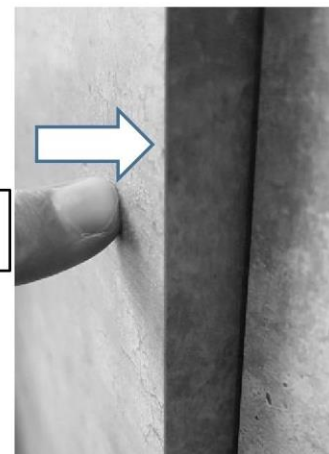
11.






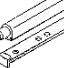

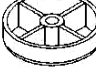

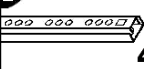

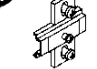
9.

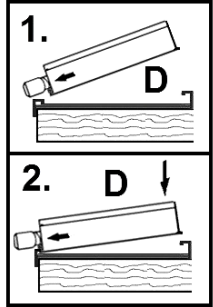
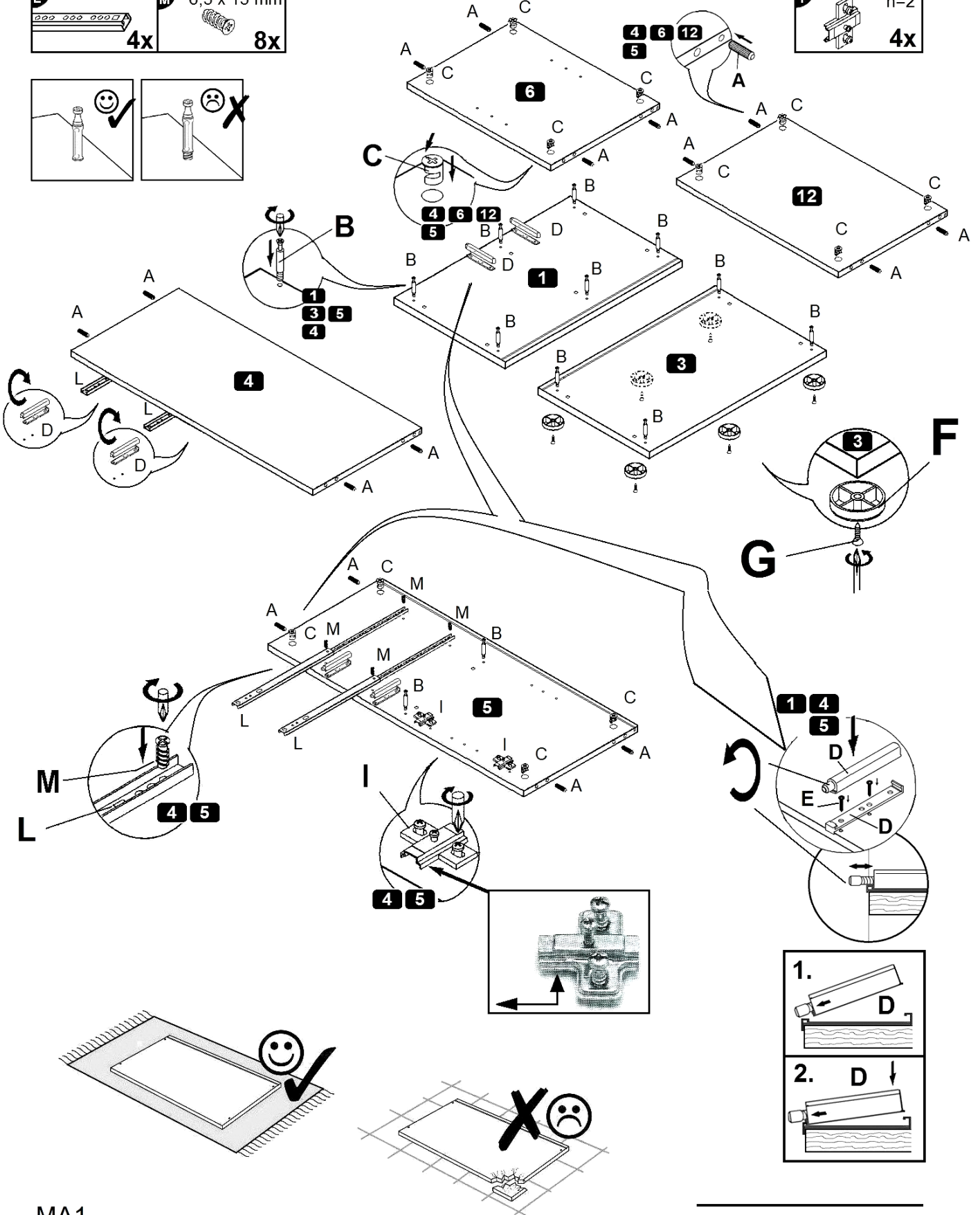
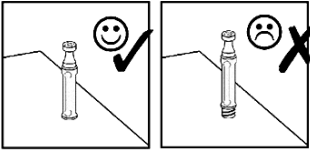


12.

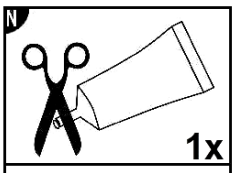


1

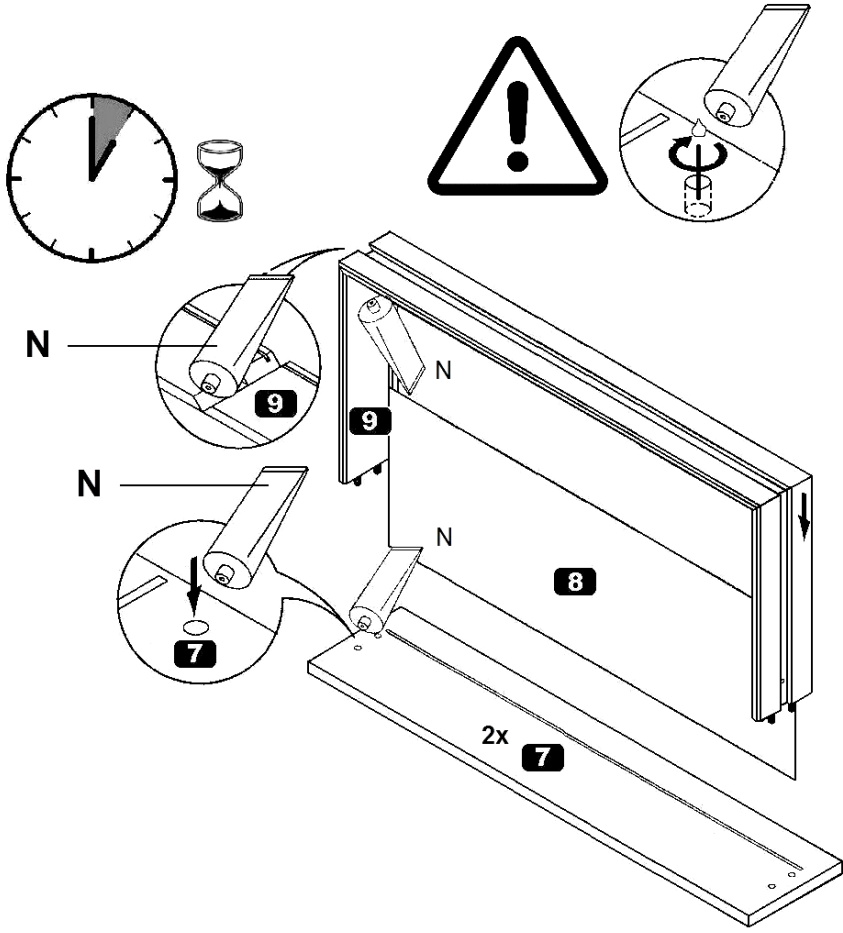
A 8,0 x 30 mm  16x	B  16x	C  16x	D  6x	E 3,0 x 12 mm  12x	F  6x	G 4,0 x 20 mm  6x	
L  4x	M 6,3 x 13 mm  8x						I  h=2 4x



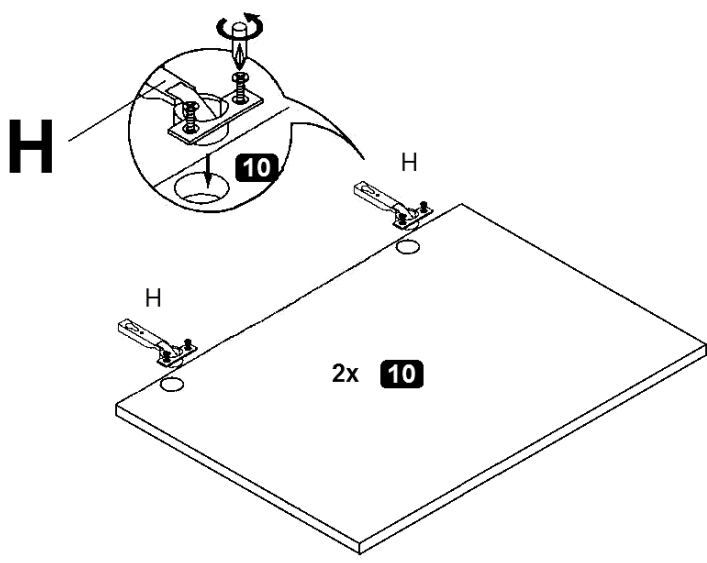
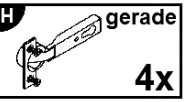
2



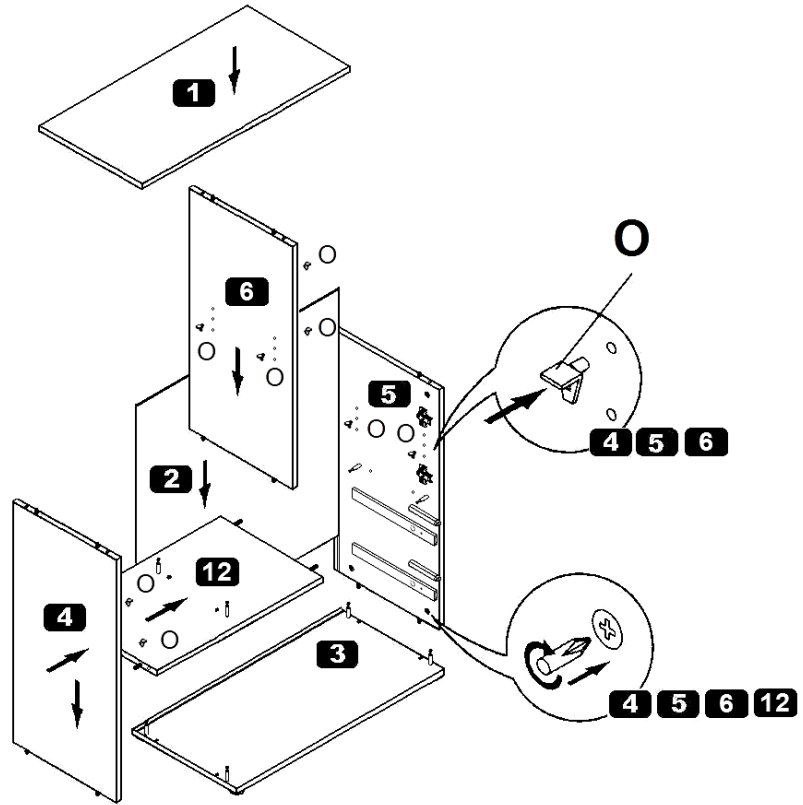
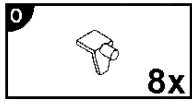
- D Leim
- GB Glue
- FR Colle
- IT Colla
- NL Lijm
- PL Klej
- CZ Lepidlo
- SK Glej
- HU Enyv
- RO Adeziv
- TR Tutkal
- RU Клей



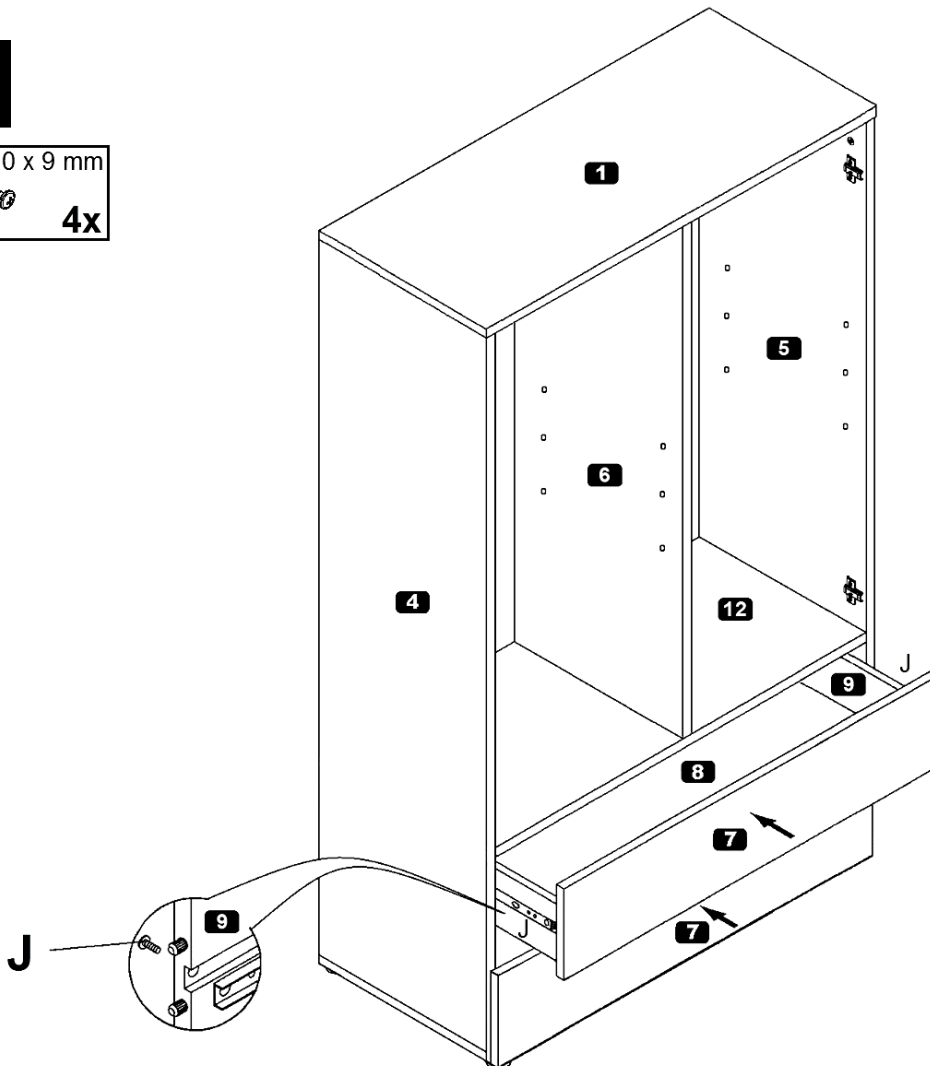
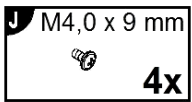
3



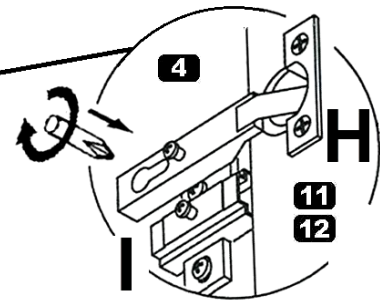
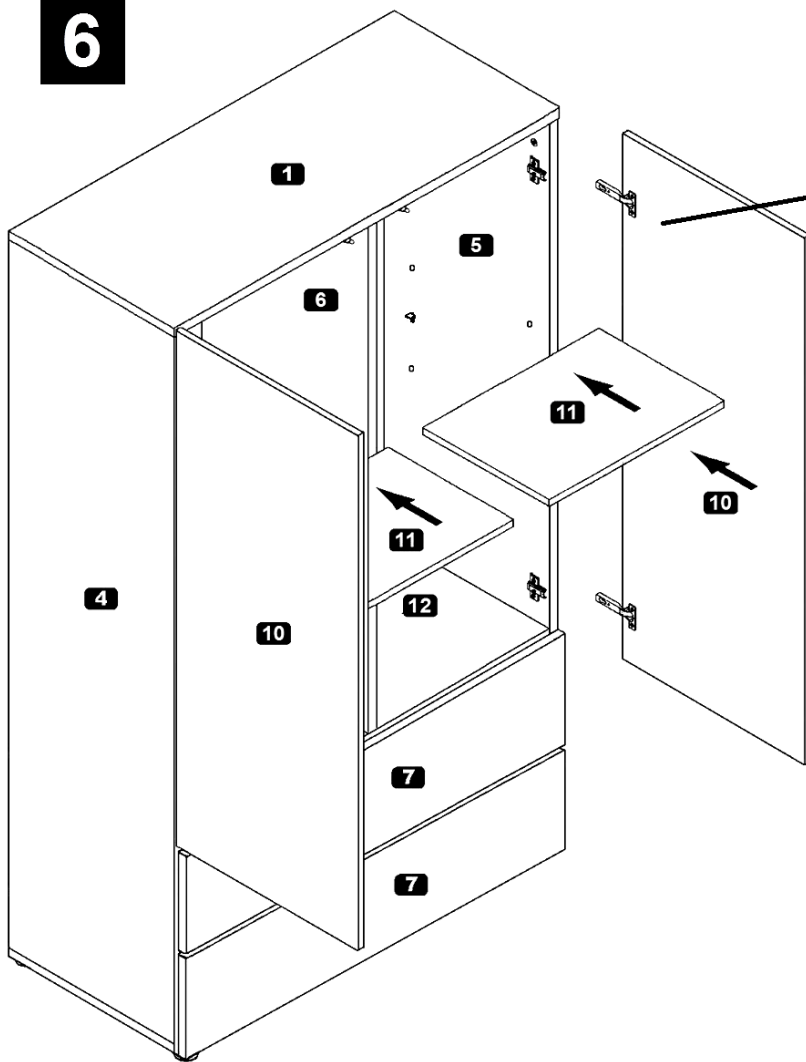
4



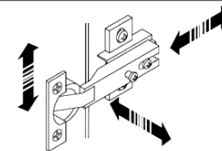
5



6



7 / 7



(D) Türen einstellen
(Scharniere justieren)

(GB) Adjusting the doors
(adjusting the hinges)

(FR) Régler les portes
(ajuster les charnières)

(IT) Sistemare la porta
(regolare le cerniere)

(NL) Deuren instellen
(scharnieren afstellen)

(PL) Nastawić drzwi
(wyregulować zawiasy)

(CZ) Vyrovnajte dvířka
(seřid'te závěsy)

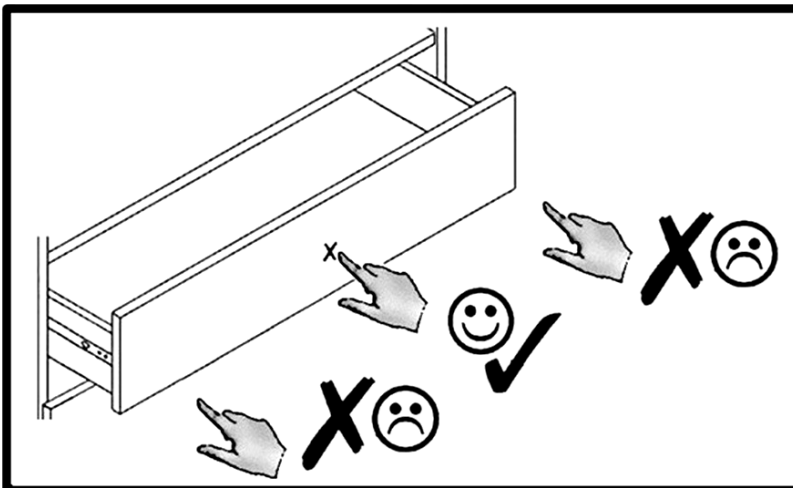
(RO) Nastavenie dverí
(nastavenie závesov)

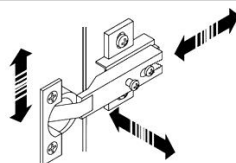
(HU) Állítsa be az ajtókat
(állítsa be a zsanérokát)

(SK) Reglare uši
(ajustare balamale)

(TR) Kapıların ayarlanması
(mentşelerin seviye ayarı)

(RU) Регулировка дверей
(регулировка шарнира)



7

(D) Türen einstellen
(Scharniere justieren)

(GB) Adjusting the doors
(adjusting the hinges)

(FR) Régler les portes
(ajuster les charnières)

(IT) Sistemare le porte
(regolare le cerniere)

(NL) Deuren instellen
(scharnieren afstellen)

(PL) Nastawić drzwi
(wyregulować zawiasy)

(CZ) Vyrovnajte dvířka
(seřid'te závěsy)

(RO) Nastavenie dverí
(nastavenie závesov)

(HU) Állítsa be az ajtókat
(állítsa be a zsanérokot)

(SK) Reglare uši
(ajustare balamale)

(TR) Kapıların ayarlanması
(menteşelerin seviye ayarı)

(RU) Регулировка дверей
(регулировка шарнира)

