



D Montageanleitung

F Notice de montage

NL Handleiding voor de montage

CZ Monzážní návod

HU Szerelési útmutató

TR Montaj talimatı

GB Assembly instructions

I Istruzione di montaggio

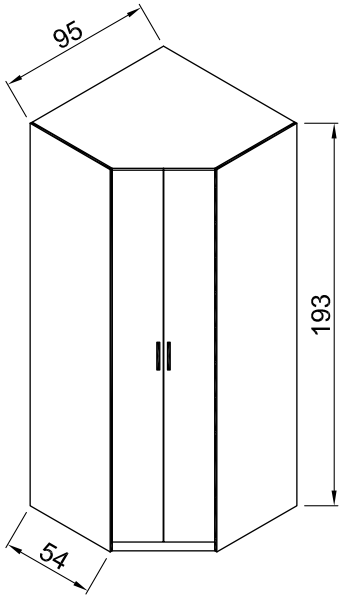
PL Instrukcja montaży

SK Návod na montáž

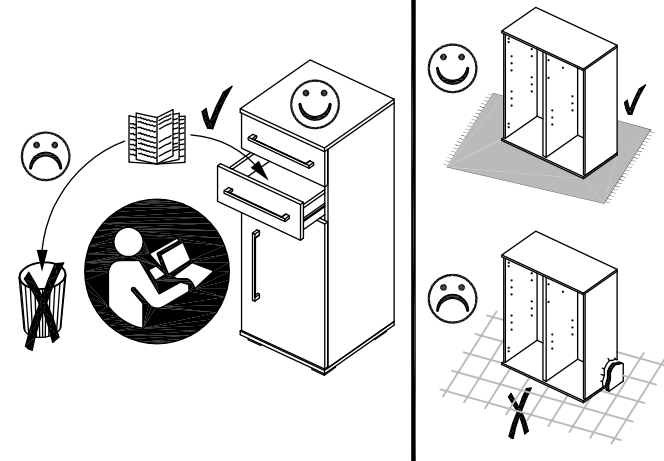
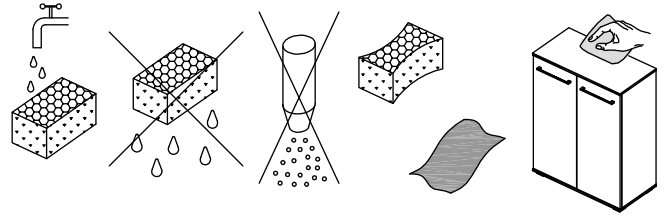
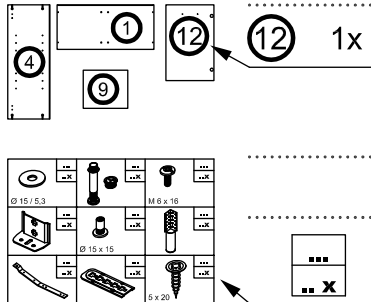
RO Instrucțiuni de montaj

RU ИНСТРУКЦИЯ ПО МОНТАЖУ

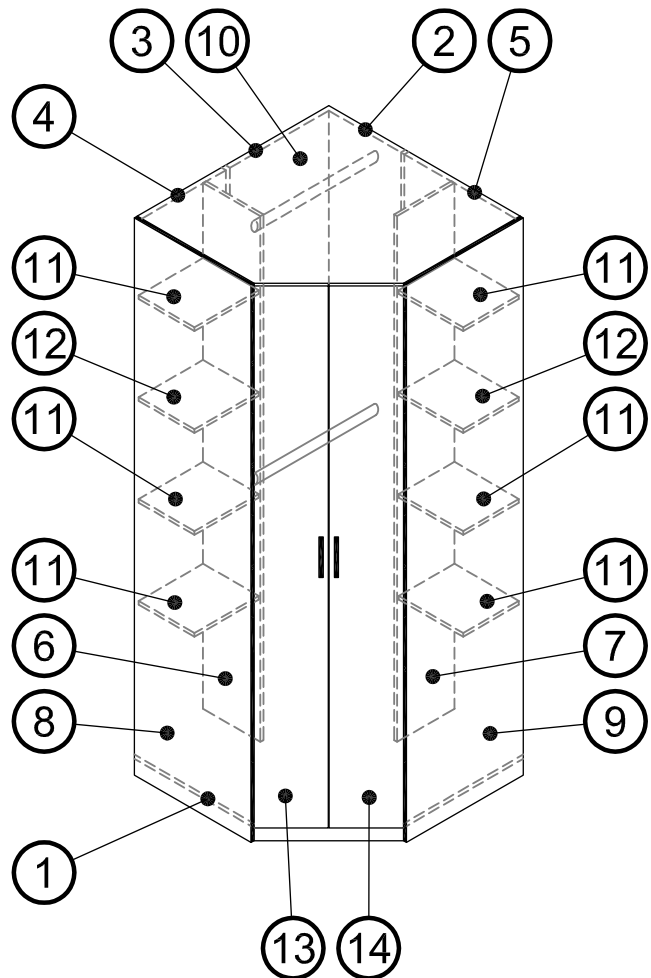
Art. Nr. 1041

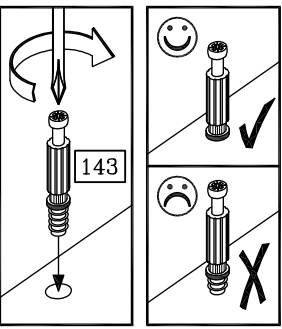


Art. Nr. 1041



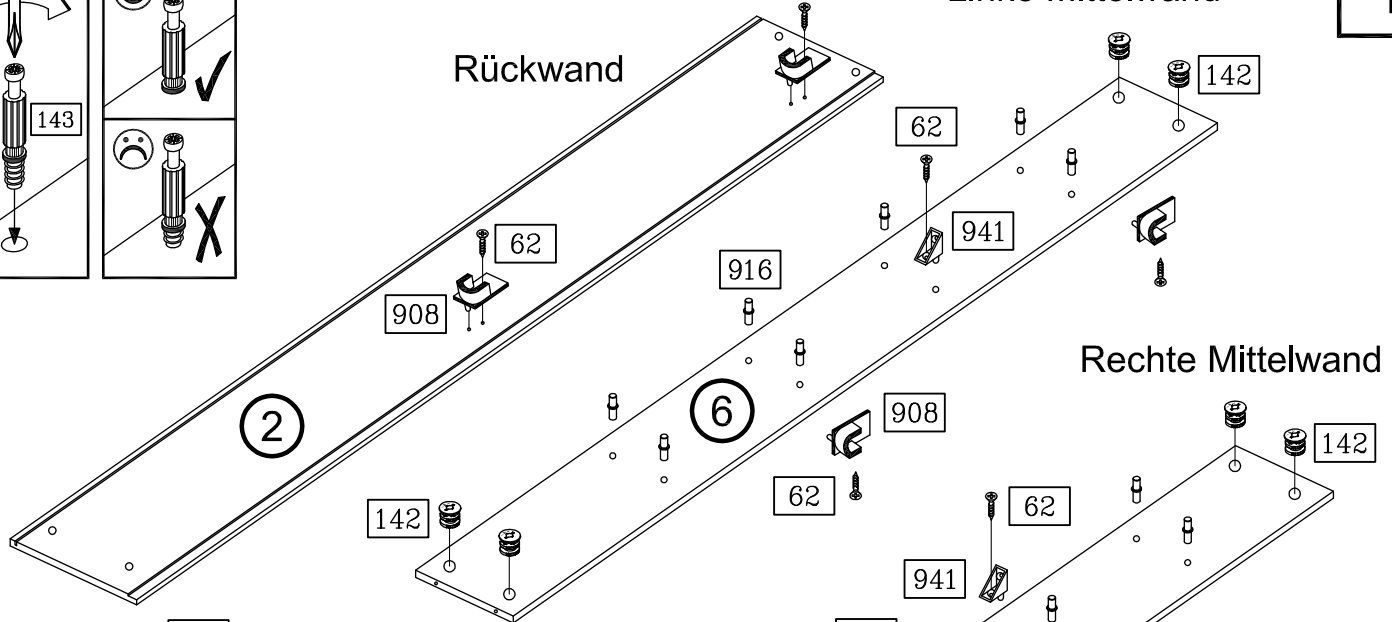
62 12x	72 7x	108 6x
3,5 x 13	4x13	
142 8x	143 8x	222 12x
Ø 15 x 11,5	6 x 44	4,5 x 55
295 2x	297 1x	364 6x
563 mm	1834 mm	
903 12x	905 8x	908 4x
	Ø 12 / 2,5	
916 28x	921 10x	927 10x
	6,3 x 11	
928 12x	941 4x	991 2x
4 x 15		



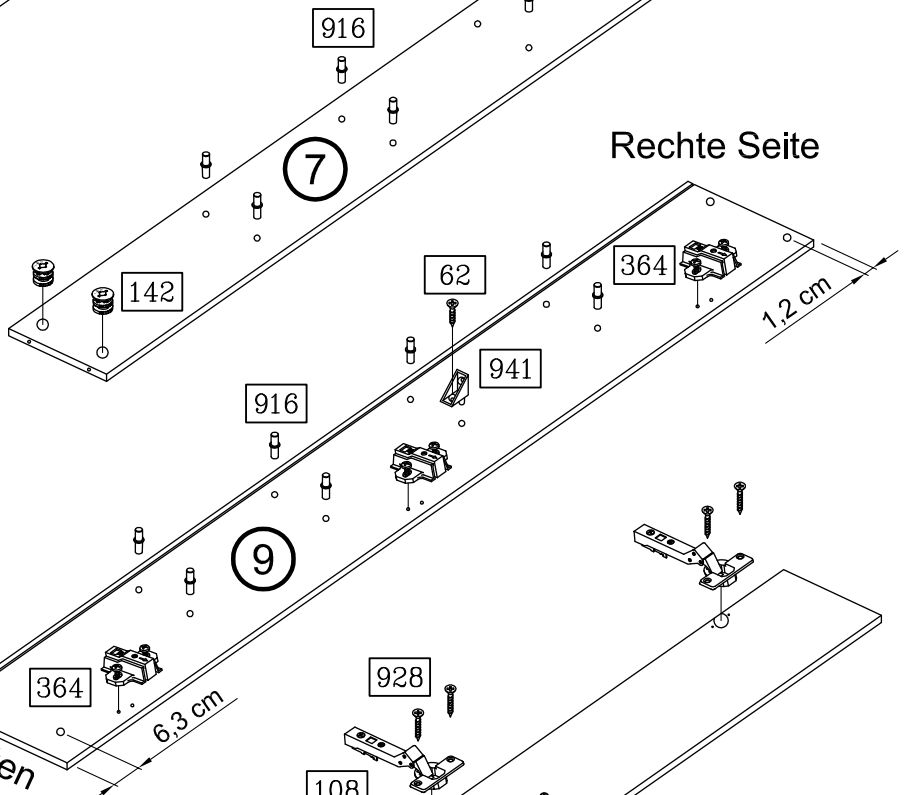
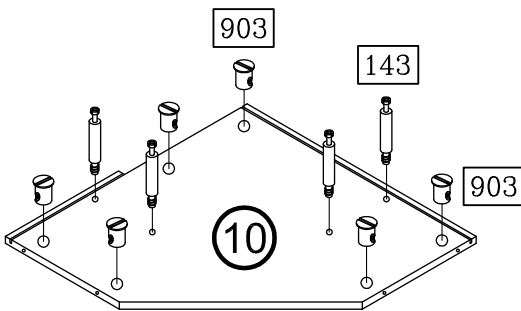
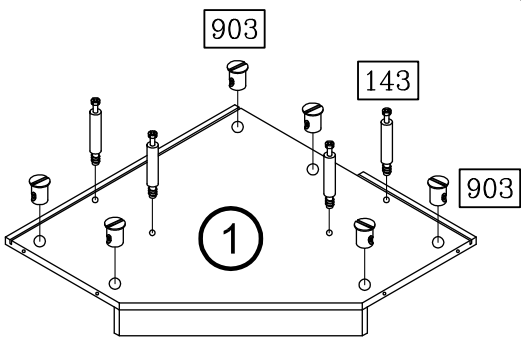


Linke Mittelwand

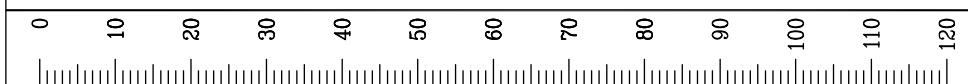
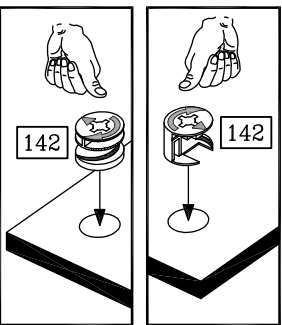
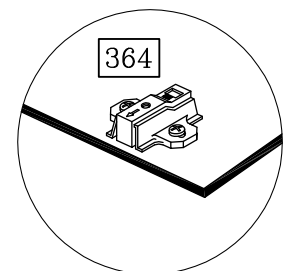
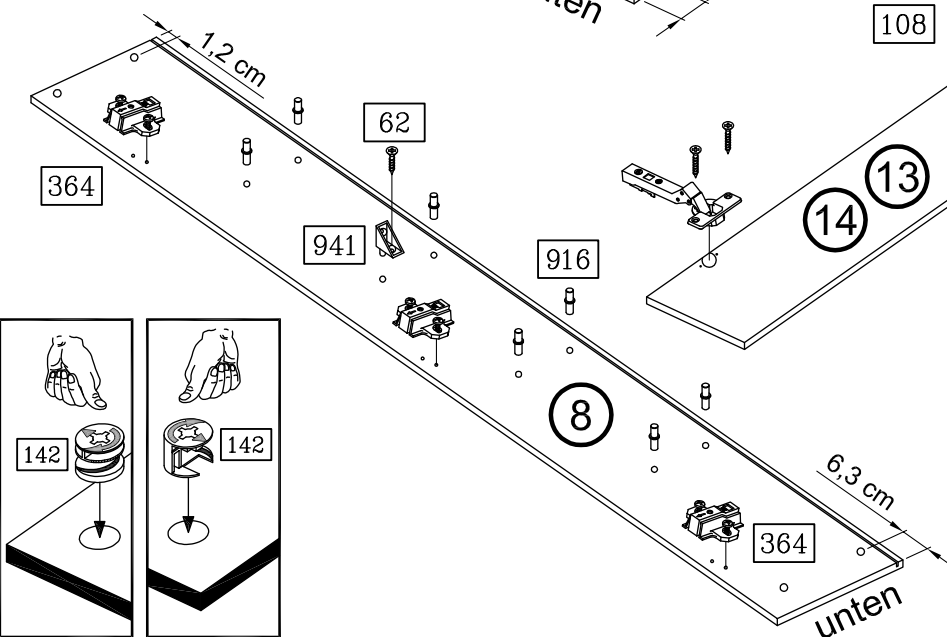
Rückwand

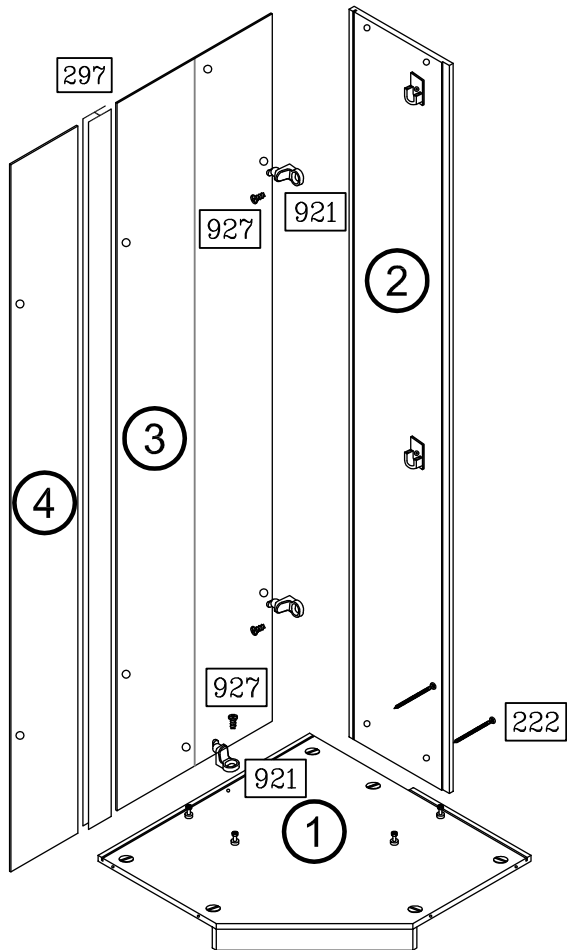
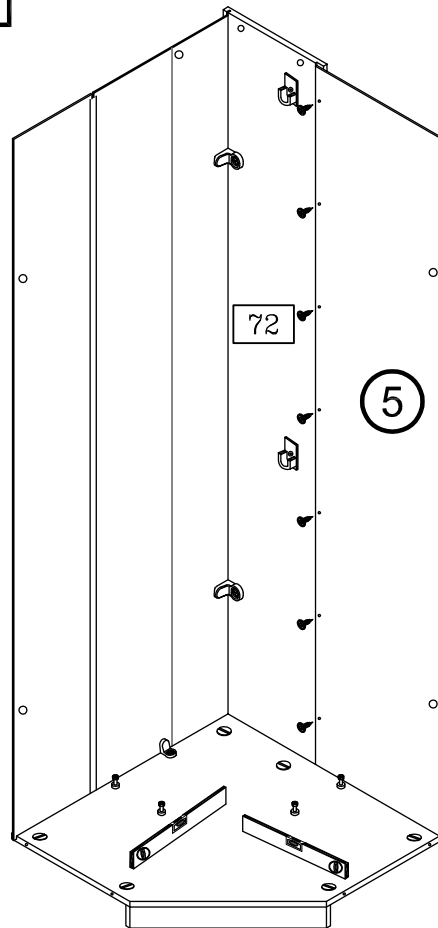
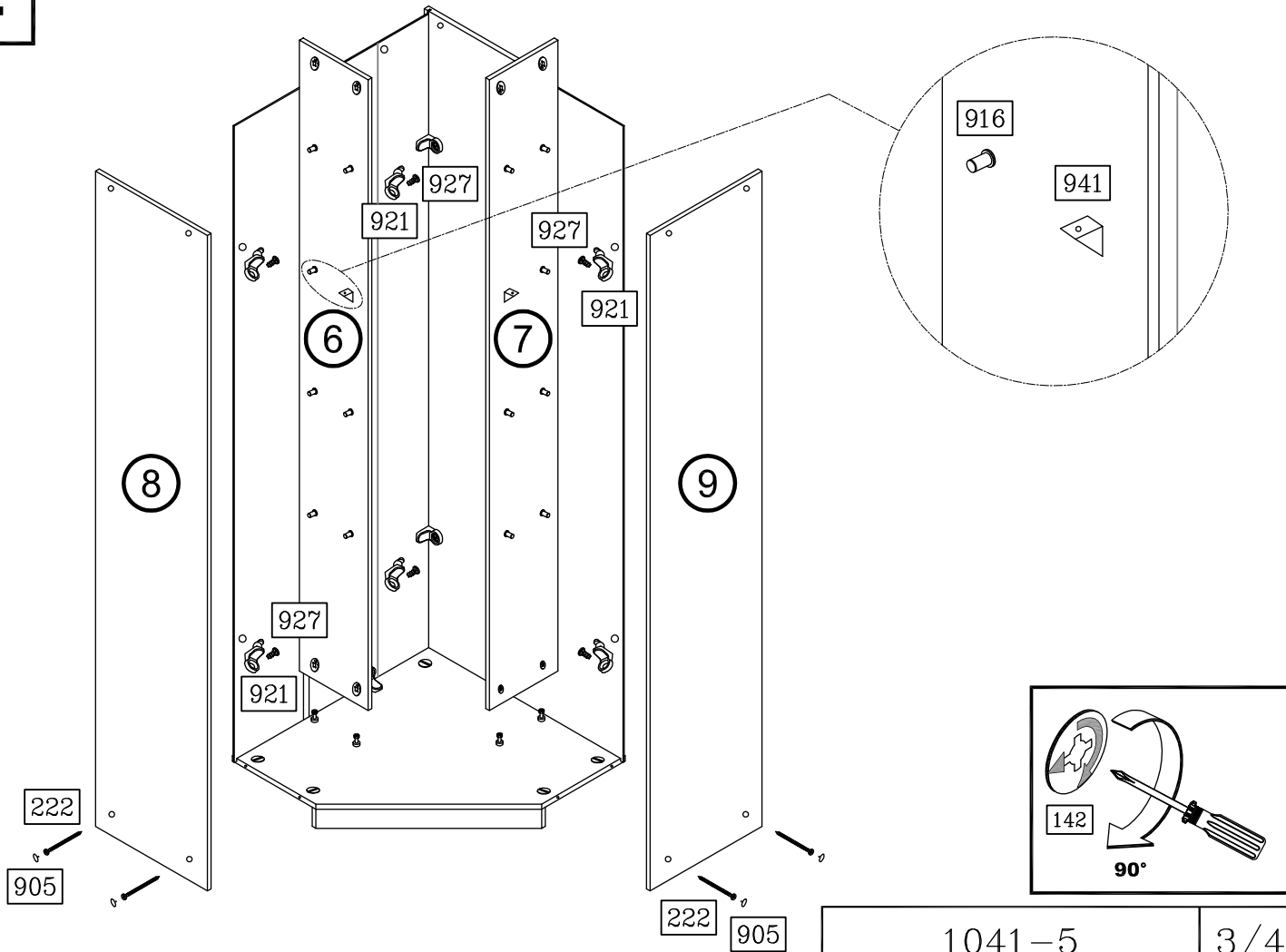


Rechte Mittelwand



Linke Seite

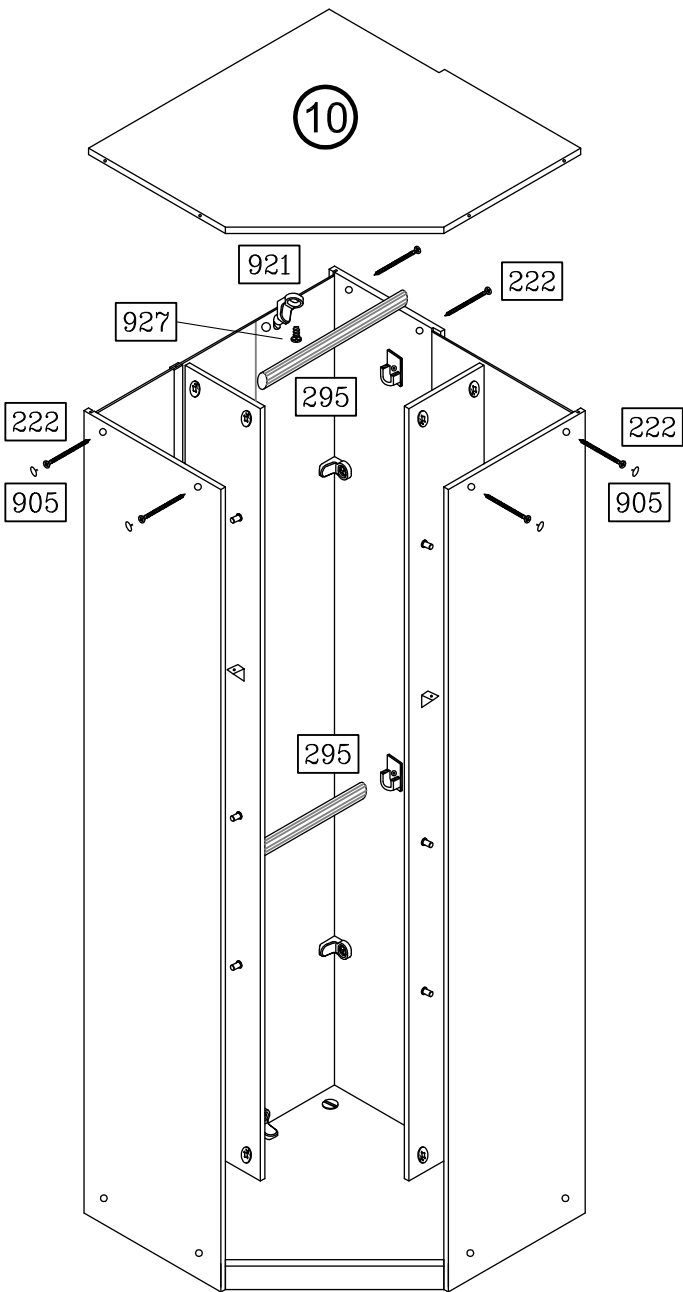


2**3****4**

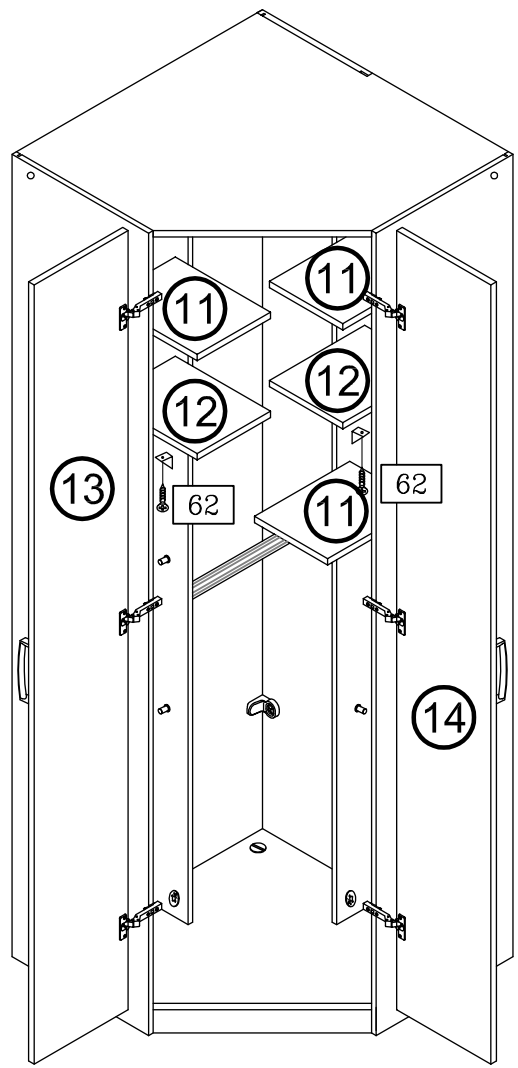
1041-5

3/4

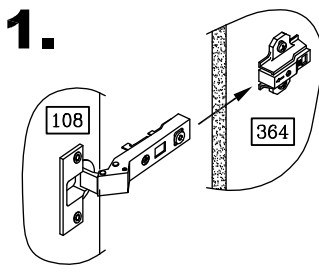
5



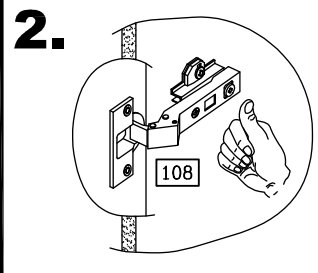
6



1.



2.



7

