



D Montageanleitung

F Notice de montage

NL Handleiding voor de montage

CZ Monzázní návod

HU Szereelési útmutató

TR Montaj talimatı

GB Assembly instructions

I Istruzione di montaggio

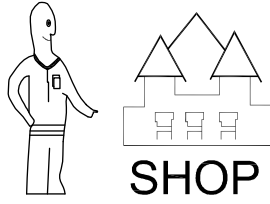
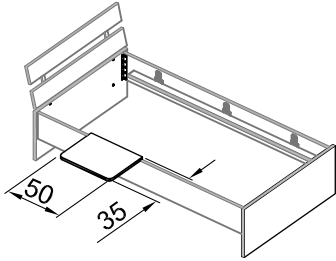
PL Instrukcja montaży

SK Návod na montáž

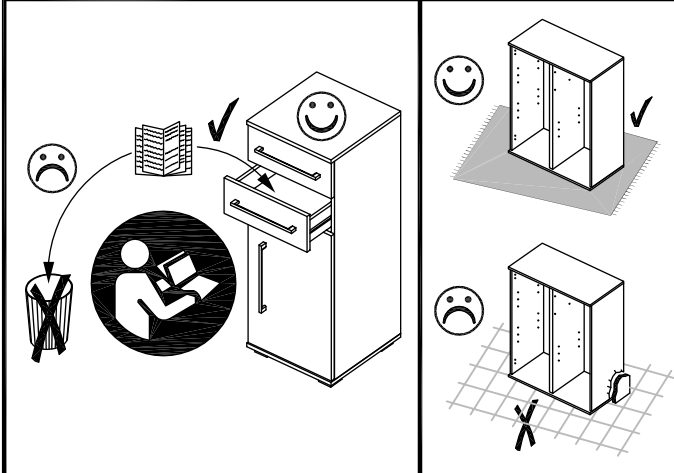
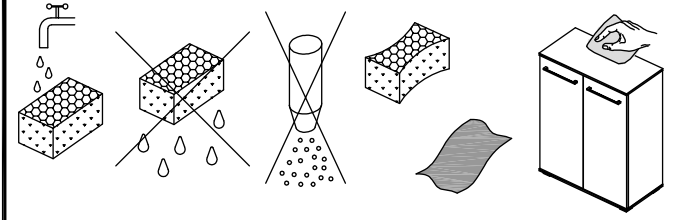
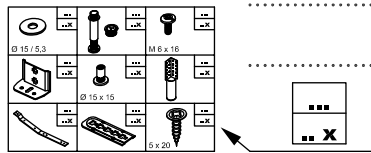
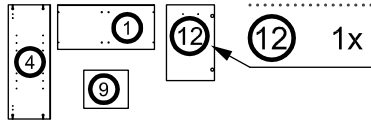
RO Instrucțiuni de montaj

RU ИНСТРУКЦИЯ ПО МОНТАЖУ

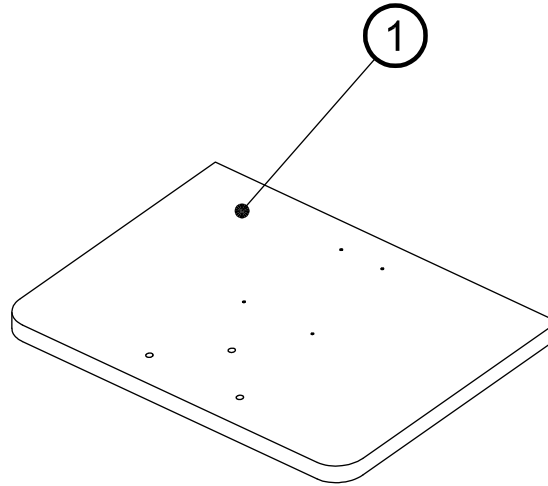
Art. Nr. 6811

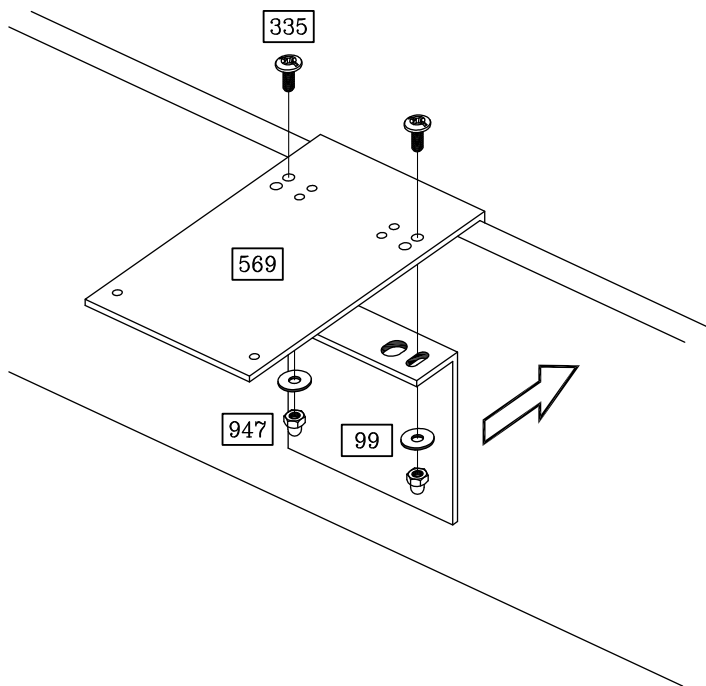
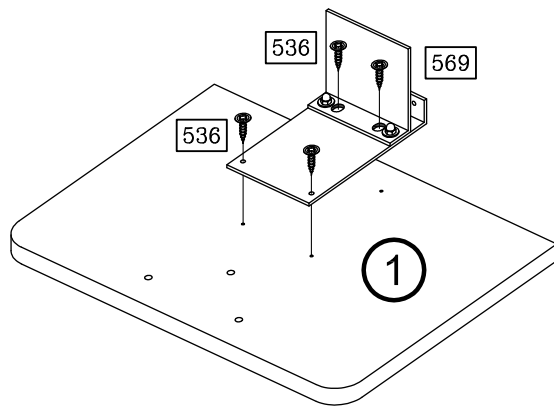


Art. Nr. 6811



	99 2x
Ø 18 / 6,4	
	335 2x
M 6 x 16	
	536 6x
5 x 20	
	569 1x
	947 2x
M 6	



1**2****3**